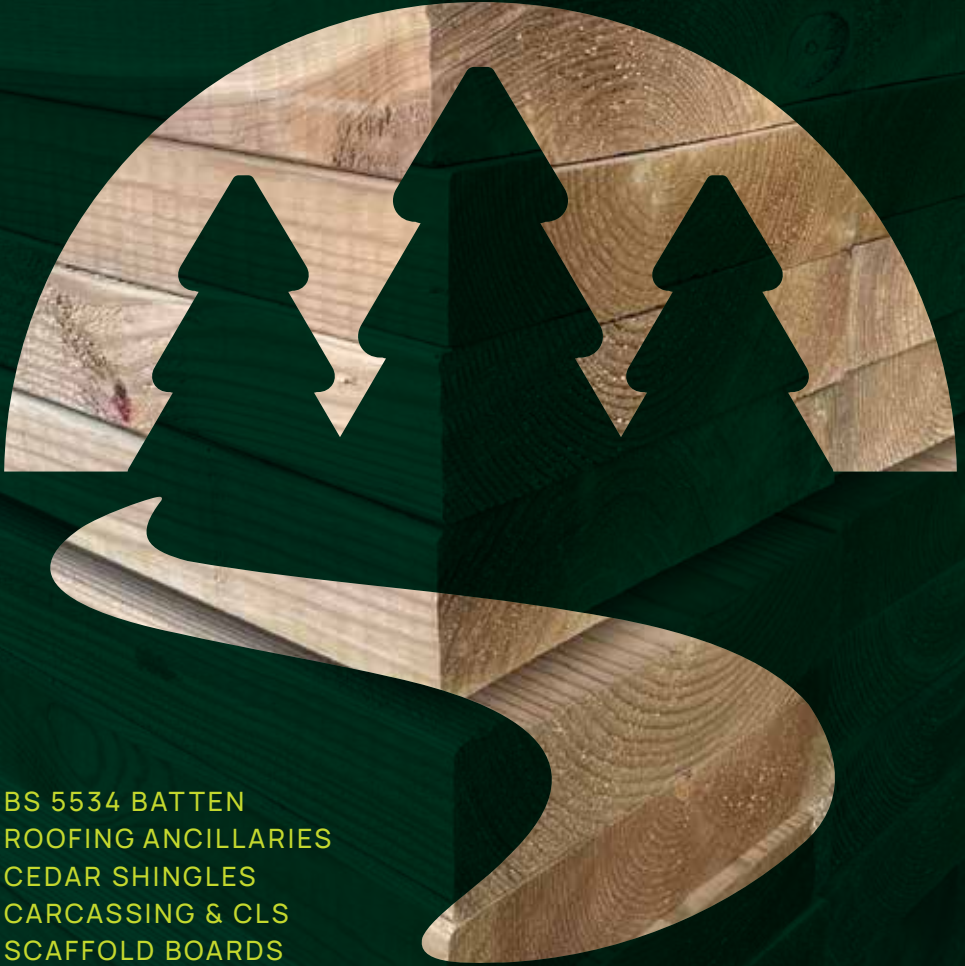


THE TIMBER GUIDE

# SR Timber Product Guide



BS 5534 BATTEN  
ROOFING ANCILLARIES  
CEDAR SHINGLES  
CARCASSING & CLS  
SCAFFOLD BOARDS  
OSB

S R TIMBER  
NUNN BROOK ROAD  
HUTHWAITE  
SUTTON-IN-ASHFIELD  
NOTTINGHAMSHIRE  
NG17 2HU

T: 01623 446800  
E: sales@sr-timber.co.uk

## Contents

Introduction	04
Journey from tree to yard	08
SRT GOLD® Batten	10
Roofing ancillaries	14
Cedar shingles and ridge	16
Treated carcassing	20
Untreated carcassing	22
Canadian Lumber Standard (CLS)	24
Scaffold boards	26
Oriented Strand Board (OSB)	28
Product range and pack information	32
Conversion factors	36

# S R Timber have, for over 20 years, specialised in distributing correctly graded roof batten to Great Britain's construction sector.

## Why we do what we do

To raise awareness of the standards - making sure only correctly graded, sustainably sourced roofing batten is installed on Great Britain's roofs.

## How we do it

Together with our like-minded sawmill partners, we share the same amount of passion and commitment for quality. We manage and control every part of the manufacturing process - from the raw material through to the final product ensuring conformity to the Code of Practice BS 5534.

## What we do

Whilst delivering our trade marked SRT GOLD® graded roofing batten, for coming up to two decades - we also offer a range of ancillary roofing timbers and construction timber products, through to cedar shingles. All sustainably sourced and fully compliant to all relevant Codes of Practice.



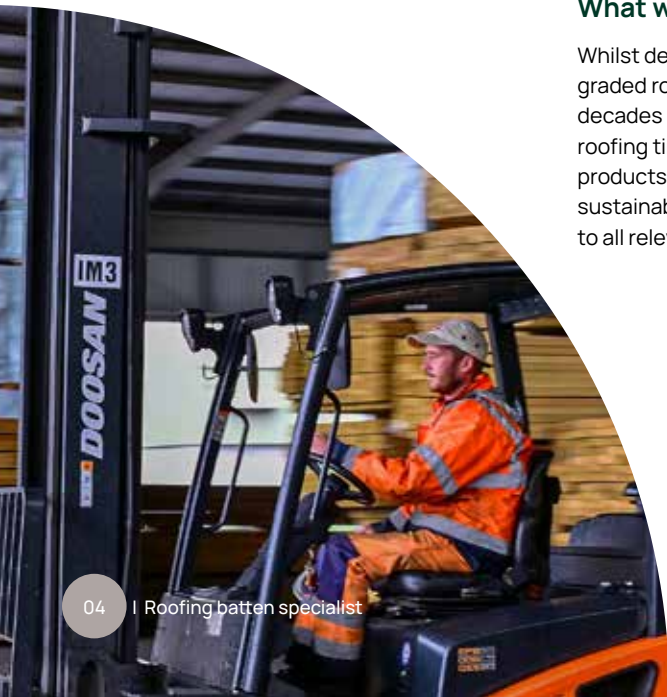
## Why choose S R Timber?

S R Timber was built to raise standards in timber roofing.

S R Timber isn't just another supplier. When S R Timber was born, it wasn't created to produce premium products. It was created to make and distribute the correct ones.

That's why we exist. To help raise standards in timber roofing - highlight what is a true and correctly graded roofing batten. To give guidance and educate the whole market. And to give roofers, merchants, and housebuilders confidence in the roofing batten they purchase and use.

S R Timber is an experienced timber importer distributing graded roofing batten and construction timber products throughout Great Britain.

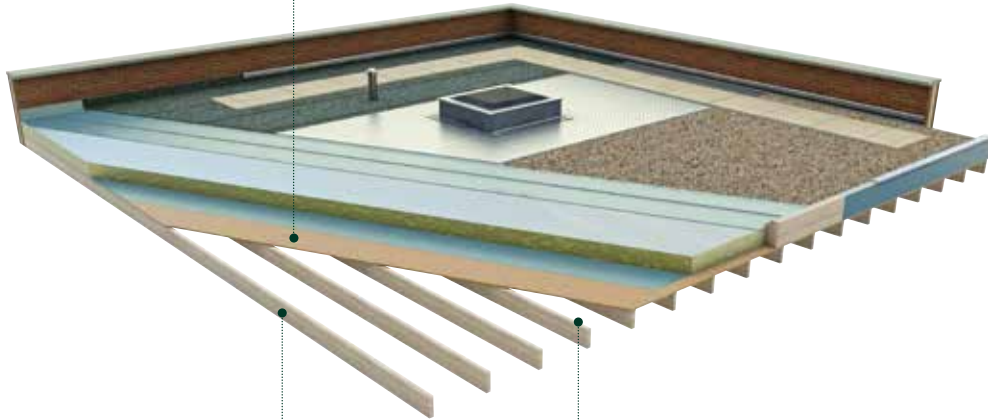


# Product Applications

Page 28

## Oriented Strand Board (OSB)

A strong, versatile board suitable for structural use with load bearing properties. Ideal for flat roofing as well as other roofing, flooring and sheathing applications.



Pages 20-23

## Ceiling Joists

Ceiling joists tie the rafters together and tighten up the roof structure. They have binders running opposite to the way they are laid. Both of these components are structural and should be made from strength graded timber.

Pages 14-15

## Firrings

Firrings are lengths of tapered timber attached to the joists of a flat roof to provide a fall so that the roof drains. Preservative treatment timber must be used.

Pages 14-15

## Ridgeboard

Ridgeboards can be planed or sawn and form the highest point of the roof, supported by the rafters. They are structural, so strength-graded timber is required.

Pages 14-15

## Roof Battens

Roofing battens support the slates and tiles and are nailed to the rafters through a felt underlay. They carry a high load and must be strength-graded and preservative treated.

BS 5534 provides grading rules for battens.

There are two cross sections for battens, 25 x 38mm and 25 x 50mm. Generally, the narrower is used for tiles and the wider one for slates.

Pages 20-23

## Rafters

The rafters form the pitch of the roof onto which the felt and tiling battens are fixed. They are structural components that should be cut from strength graded timber.

Pages 20-23

## Floor Joists

Floor joists are structural components and must be strength-graded to C16 or C24.

Joists can be of solid wood, or engineered, such as I-joists or metal web joists.

Pages 20-23

## Purlins

Purlins are large-section, load-bearing supports for roof members. Strength-graded timber must be used.

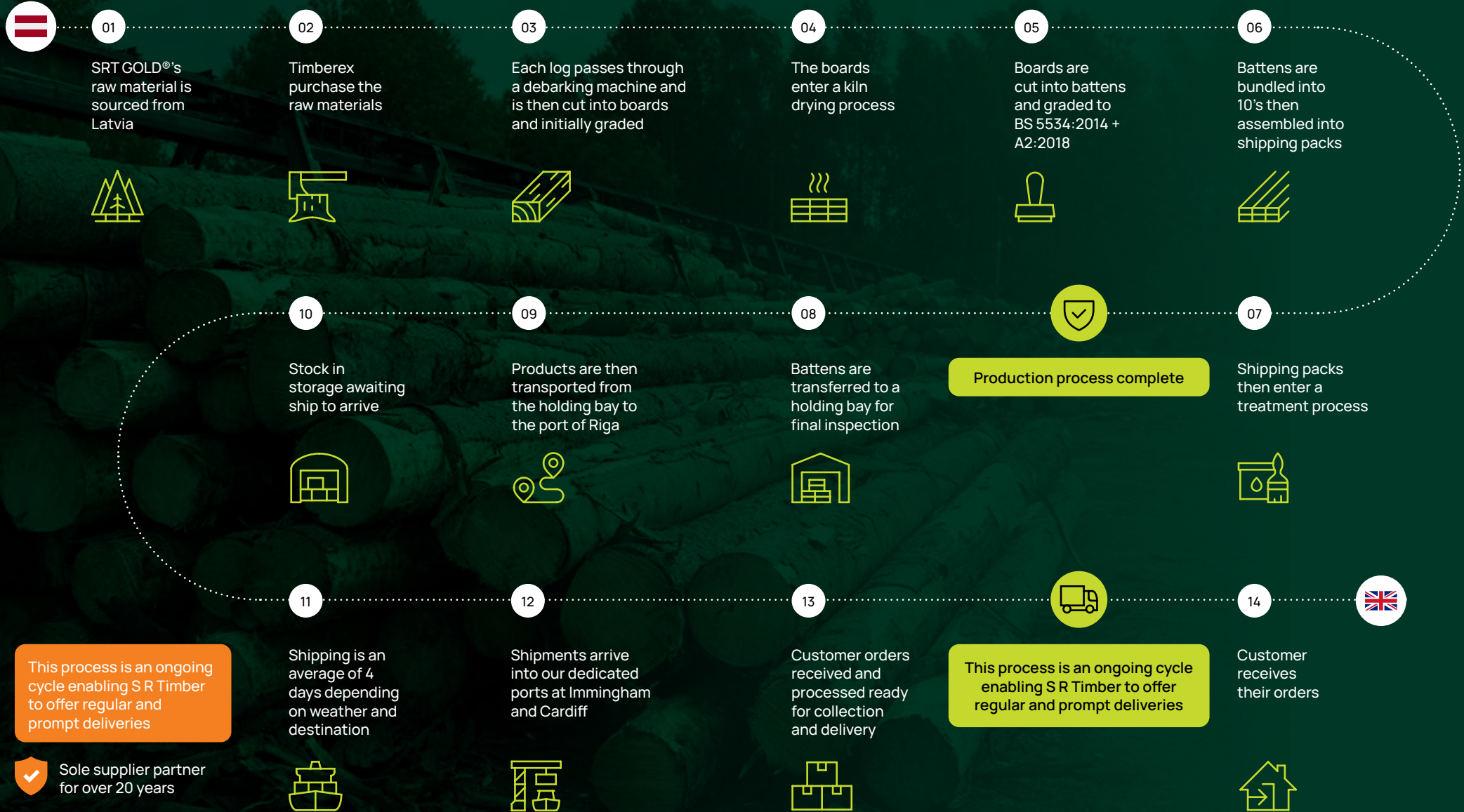
Pages 20-23

## Wall Plate

The Wall plate provides a horizontal base for the bottom of the roof, acting as a fixing point for ceiling joists and rafters. There is no requirement to use strength-graded timber.



# SRT GOLD® journey from tree to yard



# SRT GOLD<sup>®</sup> batten

## Correctly Graded Roofing Batten

- SRT GOLD<sup>®</sup> is our correctly graded roofing batten, incorporating a unique and distinctive gold/orange colouration.
- SRT GOLD<sup>®</sup> roof battens are produced in Latvia, then imported to our timber terminals.
- Fully compliant to all relevant Codes of Practice: BS 5534:2014+A2:2018 and BS 8417:2011+A1:2014 (Preservation of Wood) Use Class 2.
- Available in both 25mm x 38mm and 25mm x 50mm profiles and lengths from 3.0m up to 5.4m in increments of 300mm.

- WPA Approved Product.
- CCPi Assessed Product.



### SRT GOLD<sup>®</sup> Batten

Product Code	Dimensions (nominal)	Dimensions (finished)	Pack Size	Lengths Available
10740409	25x38mm	25x38mm	560	3.6-5.4m
10725085	25x50mm	25x50mm	440	3.6-5.4m

### Recommended Minimum Timber Batten Sizes

(Roofing and Vertical Work)

Application	Basic minimum size of battens			
	up to 450mm Span		up to 600mm Span	
	Width mm	Depth mm	Width mm	Depth mm
SLATES (double lap) Natural - sized or random	50	25	50	25
Fibre-cement or concrete	38	25	50	25
<b>Clay and concrete tiles</b>				
Double lap	38	25	38	25
Single lap	38	25	50	25

### A trusted trademarked brand

SRT GOLD<sup>®</sup> has been distributed throughout Great Britain's construction sector for almost two decades, it has a unique orange colouration, a product that has earned trust within the market, a product compliant to British Standards.

### Approved Code of Practice

Compliant with BS 5534:2014+A2:2018 Pressure treated to Use Class 2, conforming to BS 8417:2011+A1:2014.

### Third party accreditation

Regularly audited by CATG (UKAS Accredited) to ensure continued and consistent application of British Standards.



### Correct dimensions - full to size

SRT GOLD<sup>®</sup> is correctly produced, batten thickness minimum 25mm (allowed tolerances -0mm/+3mm). Batten width 38mm or 50mm (allowed tolerances -3mm/+3mm). Gold batten will be consistent in dimension.

### Chain of custody certification

Ask for our FSC<sup>®</sup> and PEFC-certified products.

### Vacsol<sup>®</sup> 6118 Aqua Preservative

Treated to BS 8417:2011+A1:2014 Impregnated to Use Class 2 by double vacuum/low pressure water based preservative. Protection with a standard 60 year service life against insect attack and wood rotting fungi. (When used correctly and installed above dpc level in buildings).

**Product stamped showing**

Producer, graded BS 5534, imported, size, CATG (our 3rd party independent accreditation marking).

**Wood Protection Association**

Timberex have WPA quality approval certification and are audited as an approved treater and capable of producing treated wood to the correct Use Class(es). Use Class of treatment is stated on all documentation.



**Each delivery is accompanied with documentation stating**

Supplier, imported, graded in accordance with BS 5534, sizes, type of treatment and chain of custody certification details.

**Factory graded roofing battens**

We control by; firstly, automated and visual grading of the raw material, the second process is actually grading every piece of produced batten at commercial speed - grading consists of checking dimensions, knot sizes, wane, fissures and splits, slope of grain, rate of growth, distortion, decay, insect attack and sap stain, are all within the requirements set out in BS 5534.

**Kiln dried to the correct levels**

Firstly ensuring the timber is at the correct moisture content to enable the treatment process works correctly, then the final product - graded roofing batten, will be treated correctly and will conform to BS 8417 - having sufficient treatment within the material to Use Class 2, and giving a 60 year service life.



# Batten shield

**S R Timber Batten Shield - Batten End Seal**

- Makes batten cut ends compliant with BS 5534
- Prevents water damage
- Non-drip cream structure
- 0% VOC (Volatile Organic Compounds)
- Non-film-forming (Does not flake off)
- Reduces the risk of micro-organism growth & frost damage
- Hazard Classification: H412

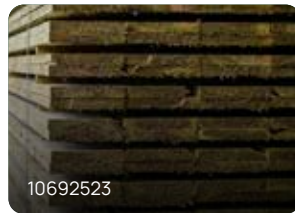
**S R Timber Batten Shield**

Product Code	Colour	Pack Size	Box Qty
10691944	Gold	1 litre tin	6 tins

# Roofing Ancillaries

S R Timber's range of treated speciality roofing timber are either manufactured at our partner sawmill in Latvia or sourced via carefully selected 3rd party production partners across Europe. Many of these timbers are smaller in section making them more difficult to produce and therefore not as widely available to source as other construction timber. S R Timber have long standing relationships with our partner mills giving us the continuity of supply our customers need and have come to expect.

**If there are other sizes / dimensions you require, please ask as we may well be able to supply.**



## Sawn & Treated Batten

Product Code	Dimensions (nominal)	Dimensions (finished)	Pack Size (pcs)	Lengths Available
10740410	19x38mm	19x38mm	700	3.0m-5.4m
10740416	25x38mm	25x38mm	560	3.0m-5.4m
10740417	25x50mm	25x50mm	440	3.0m-5.4m

## Treated Counter Batten

10238617	6x25mm	6x25mm	5000	2.1m/2.4m
10692503	11x38mm	11x38mm	1120	3.0m
10692504	11x50mm	11x50mm	880	3.0m
10692506	38x50mm	38x50mm	300	3.0m-4.8m

## Treated Board & Sarking

10720273	Treated Softwood Sarking Board	19x150mm	240	4.2m/4.8m
10692435	Sawn Treated Timber	22x100mm	Varies	Varies
10692523	Sawn Treated Timber	22x150mm	Varies	Varies

## Treated Furring

10752004	47x50mm	47x50mm	200	Varies
----------	---------	---------	-----	--------

## Treated Arris / Tilt Fillet

10692511	47x50mm	47x50mm	480	Varies
10692508	47x100mm	47x100mm	100	Varies

## Treated Lead Roll

10692515	50x50mm	50x50mm	100	2.4m
----------	---------	---------	-----	------



# Cedar shingles and ridge

Western Red Cedar Blue Label 5X cedar shingles are naturally insect and rot resistant requiring no further treatment and sourced from sustainable forests in Western Canada. After weathering they will adopt a silvery grey shade.

S R Timber offer both treated and untreated options on our range of shingles and ridge to suit varying applications. It is advised to check NFRC technical guidance notes on fixing cedar shingles and if treatment is advised, this tends to be calculated on geographical location of which the product is to be fixed. Good practice is to also follow specification and fixers advice.



## Western Red Cedar Blue Label Shingles 16in

Product Code	Pack Size	Treatment
10532816	2.28m <sup>2</sup>	Y
10667211	2.28m <sup>2</sup>	N

## Western Red Cedar Blue Label Shingles 18in

Product Code	Pack Size	Treatment
10532819	4.5lm	Y
10532818	4.5lm	N

## Stainless Steel Nails 31 x 1.8mm

Product Code	Pack size
10238685	1kg



Colour	Natural, varying reddish brown to pale yellow
Grade	Blue Label, 100% Heartwood, 100% Edge Grain and 100% Clear
Size	400mm long, random widths 75mm - 350mm
Thickness	10mm at the butt, tapering
Profile	Sawn both sides, rectangular
Maximum Pitch	90°
Minimum Pitch	14°
Minimum Side Lap	38mm

Pitch	Maximum Gauge	Coverage m <sup>2</sup> per bundle
90°	190mm	3.47
22-90°	125mm	2.28
14-22°	95mm	1.73

- Recommended fixings are stainless steel 31mm x 1.8mm annular ring nails.
- Each shingle should be fixed with two nails.
- 1kg of nails will be required for every 4 bundles of shingles.

#### Recommended Roofing battens SRT Gold® BS 5534:2014 + A2:2018

90°	25 x 50	5.3m - Battens per m <sup>2</sup>
450mm centres	25 x 38	8.0m - Battens per m <sup>2</sup>
600mm centres	25 x 38	10.5m - Battens per m <sup>2</sup>

- We recommend that gloves are worn at all times when handling timber products.



# Treated carcassing

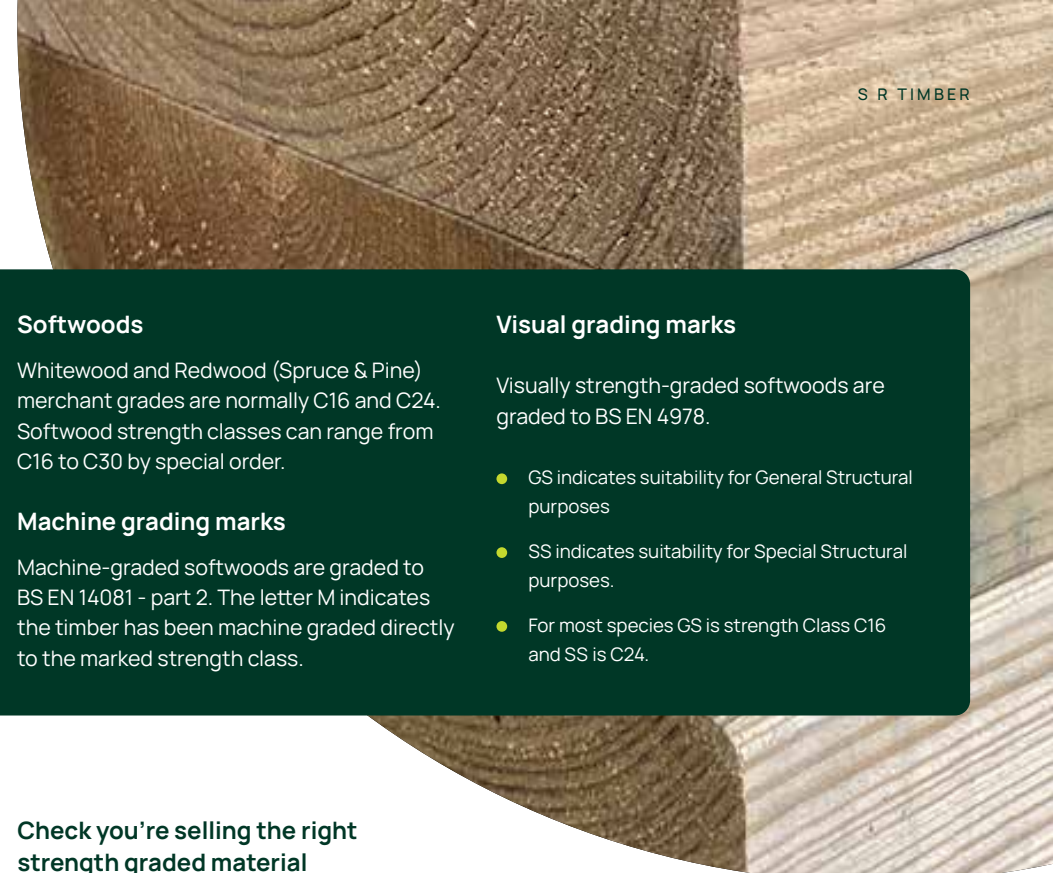
Carcassing is normally British or European Whitewood (Spruce). It will be strength graded to C16 for general structural applications in floors, walls and roofs. The higher strength class C24 is intended for longer span or greater load applications.

Other species may also be available for more specialist applications such as European Redwood (Pine), which takes preservative treatment well and so is ideally suited for structural exterior Use Class 4 applications, including deck joists and substructures.

- Carcassing is mostly supplied machined, which means consistent sizes and reduced splinters for the improved safety of construction workers. This is also why edges are 'eased'.
- It can be supplied untreated or preservative treated, so make sure you get the Use Class treatment level right for the customer's intended end use. Most carcassing is only supplied treated to Use Class 2 - suitable only for applications within the building envelope.

## Treated carcassing

Product Code	Dimensions (nominal)	Dimensions (finished)	Pack Size	Lengths Available	Product grade
10733573	47x50mm	45x45mm	242	2.4-6.0m	Ungraded
10692512	47x75mm	45x70mm	154	2.4-6.0m	C16
10692507	47x100mm	45x95mm	121	2.4-6.0m	C24
10692509	47x125mm	45x120mm	99	2.4-6.0m	C24
10692516	47x150mm	45x145mm	77	2.4-6.0m	C24
10692519	47x175mm	45x170mm	66	2.4-6.0m	C24
10692520	47x200mm	45x195mm	55	2.4-6.0m	C24
10692521	47x225mm	45x220mm	55	2.4-6.0m	C24



### Softwoods

Whitewood and Redwood (Spruce & Pine) merchant grades are normally C16 and C24. Softwood strength classes can range from C16 to C30 by special order.

### Machine grading marks

Machine-graded softwoods are graded to BS EN 14081 - part 2. The letter M indicates the timber has been machine graded directly to the marked strength class.

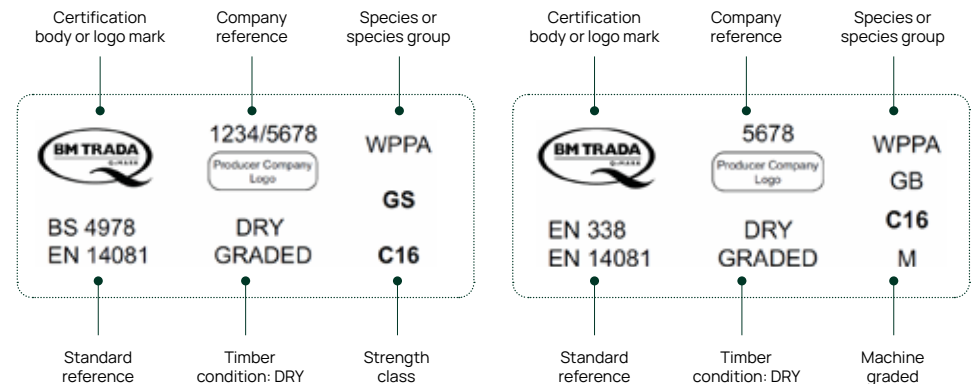
### Visual grading marks

Visually strength-graded softwoods are graded to BS EN 4978.

- GS indicates suitability for General Structural purposes
- SS indicates suitability for Special Structural purposes.
- For most species GS is strength Class C16 and SS is C24.

### Check you're selling the right strength graded material

Machine-graded softwoods are graded to BS EN 14081 - part 2. The letter M indicates the timber has been machine graded directly to the marked strength class.



## Untreated carcassing

As well as treated carcassing, SR Timber offer a range of untreated carcassing alternatives. Likewise, these are normally British or European Whitewood (Spruce) and will be strength graded to C16 or the higher strength class, C24.

Product Code	Dimensions (nominal)	Dimensions (finished)	Pack Size	Lengths Available	Product grade
10733574	47x50mm	45x45mm	242	2.4-6.0m	Ungraded
10733593	47x75mm	45x70mm	154	2.4-6.0m	C16
10700289	47x100mm	45x95mm	121	2.4-6.0m	C24
10733570	47x125mm	45x120mm	99	2.4-6.0m	C24
10700296	47x150mm	45x145mm	77	2.4-6.0m	C24
10700194	47x175mm	45x170mm	66	2.4-6.0m	C24
10700191	47x200mm	45x195mm	55	2.4-6.0m	C24
10733572	47x225mm	45x220mm	55	2.4-6.0m	C24

**The higher strength class (C24) is intended for longer span or greater load applications**

Carcassing is supplied machined which means consistent sizes and reduced splinters for the improved safety of construction workers

Wider section / longer lengths are also available to order

# Canadian Lumber Standard (CLS)

The most common form of timber for studing and creating internal partitions is CLS, which is supplied regularised (surfaced) with eased edges. It is usually made from kiln-dried Whitewood (Spruce) and strength graded to C16.

Product Code	Dimensions (nominal)	Dimensions (finished)	Pack Size	Lengths Available	Product grade
10692517	50x75mm	38x63mm	448	2.4/3.0/4.8m	C16
10692518	50x100mm	38x89mm	336	2.4/3.0/4.8m	C16

- Kiln dried at source to avoid shrinkage and movement
- All 4 corners eased edge (E4E)
- Ideally suited for timber studing
- Graded C16 and better to BS 4978

# Scaffold boards

Scaffold boards are imported as a finished product to our timber terminal here in the UK. You can rest assured that all scaffold boards are fully compliant to BS 2482:2009. Furthermore, the manufacturing process is regularly audited by CATG (UKAS Accredited) to ensure continued and consistent application of British Standards.

Product Code	Dimensions (nominal)	Dimensions (finished)	Pack Size	Lengths Available
10692050	36x225	36x225	110	3.9m

	BS 2482:2009	Meets the standard
Safe support span	1.2m (see end bands)	✓
Grading methods	Machine or visual	✓
Testing	100%	✓
Identification	CATG	✓

## Scaffold Board performance:

To help you use the most effective boards for your scaffold, here are some of the strength properties from BS 2482:2009:

Target board thickness	Target Span	Walking moment of resistance of a single board where:	
mm	m	An applied load acts only on an individual board kNm	An applied load spread is uniformly* across a minimum of 4 board kNm
38	1.2	0.50	0.61



# Oriented Strand Board (OSB)

OSB is an engineered wood-based panel material in which long strands of wood are bonded together with a synthetic resin adhesive. OSB is usually composed of three layers, with the strands of the outer two layers orientated in a particular direction, more often than not in the long direction of the panel. It is used extensively for the roof, wall, and floor sheathing in residential and commercial construction.

## SMARTPLY MAX

SMARTPLY MAX is a strong, versatile board suitable for structural use in humid conditions (service Class 1 and 2), ideal for applications as diverse as roofing, flooring and wall sheathing etc.

SMARTPLY MAX is a moisture resistant load-bearing panel designed for use in humid conditions and is therefore ideal for many structural and non-structural applications in both internal and protected external environments.

Manufactured in accordance with BS EN 300:2006, it is the perfect choice for roofing, flooring, wall sheathing and many other applications where strength and moisture resistance are paramount.

### Features and benefits

- FSC® Certified
- Durable
- Versatile
- Sustainable
- No added formaldehyde



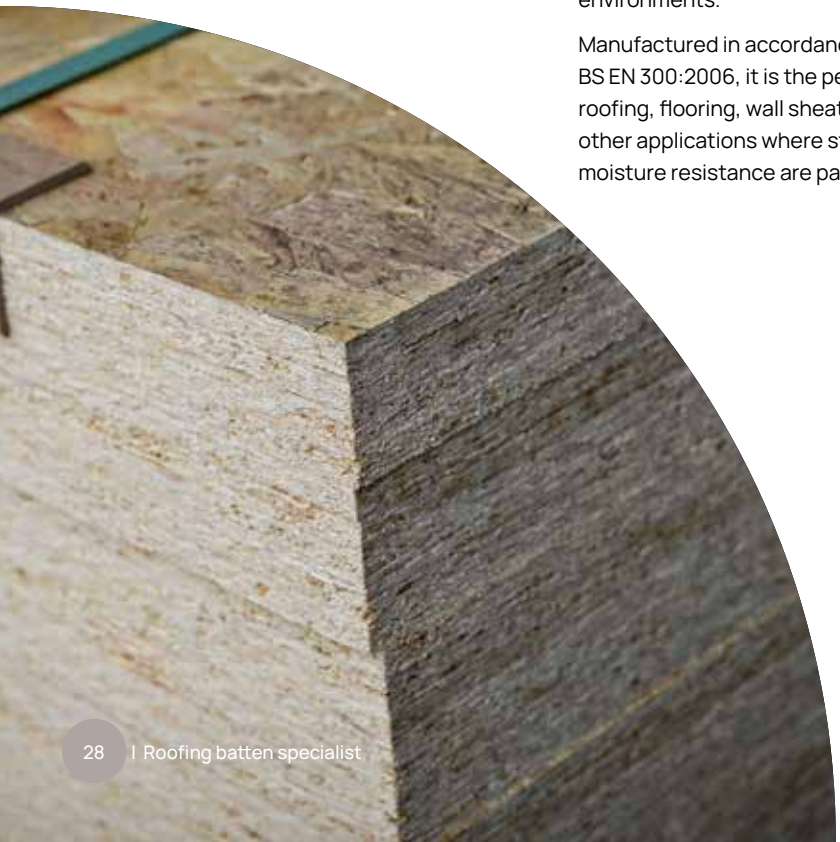
### Thicknesses and sizes

Standard sizes	1197 x 2397	1220 x 2440	1250 x 2500	1197 x 2697	1197 x 2997
Available thickness	9mm, 11mm, 15mm, 18mm, 22mm	8mm, 9mm, 11mm, 15mm, 18mm, 22mm, 24mm	9mm, 11mm, 15mm, 18mm, 22mm	9mm, 11mm, 15mm	9mm, 11mm, 15mm

### Suitability:

It is versatile, strong and cost-effective. Manufactured with exterior resins, SMARTPLY MAX is suitable for both interior and exterior structural applications such as roofing, flooring and wall sheathing.

Product Code	Product description	Thickness (mm)	Length (mm)	Width (mm)	Pack size	Product grade
10268993	SMARTPLY MAX	9	2397	1197	100	OSB/3
10268988	SMARTPLY MAX	11	2440	1220	82	OSB/3
10268987	SMARTPLY MAX	18	2440	1220	50	OSB/3



# Oriented Strand Board (OSB) - Tongue & Grooved (T&G)

## SMARTPLY MAX T&G

SMARTPLY MAX T&G is a moisture resistant load-bearing panel designed for use in humid conditions and is therefore ideal for many structural and nonstructural applications in both internal and protected external environments.

Manufactured to the same exacting standards as SMARTPLY MAX but with the addition of tongue and grooved edges.

Ideal for numerous load bearing applications such as roofing and flooring. SMARTPLY MAX T&G along with all other SMARTPLY products carries the FSC® certification conformity assessed (CE, UKCA) to EN 13986:2004+A1:2015

## Thicknesses and sizes

Standard sizes	1200 x 2397	1220 x 2397	1220 x 2440	590 x 2440	600 x 2440
Available thickness	22mm	15mm, 18mm	18mm, 22mm	15mm, 18mm	15mm, 18mm

## Suitability:

SMARTPLY MAX T&G is suitable for roofing and flooring applications in humid conditions (Service Class 1 & 2).

Product Code	Product description	Thickness (mm)	Length (mm)	Width (mm)	Pack size	Product grade
10268990	SMARTPLY MAX T&G	18	2400	600	100	OSB/3

## Features and benefits

- FSC® Certified
- Moisture Resistant
- Sustainable
- Tongue & Groove Edge Profile
- No added formaldehyde





# Product Range & Pack Information

Product code	Product	Nominal size(mm)	Actual size(mm)	Grade (if applicable)	Pack Qty (pcs unless stated)
<b>SRT GOLD®</b>					
10740409	SRT GOLD®	-	25 x 38	BS 5534	560
10725085	SRT GOLD®	-	25 x 50	BS 5534	440
<b>Sawn &amp; Treated</b>					
10740410	SRT Green	-	19 x 38	-	700
10740416	SRT Green	-	25 x 38	-	560
10740417	SRT Green	-	25 x 38	-	440
<b>Treated Roofing Timber</b>					
10238617	Treated Counter Batten	-	6 x 25	-	5000
10692503	Treated Counter Batten	-	11 x 38	-	1120
10692504	Treated Counter Batten	-	11 x 50	-	880
10692418	Treated Counter Batten	-	19 x 50	-	440
10692522	Sawn & Treated	-	22 x 100	-	Varies
10692523	Sawn & Treated	-	22 x 150	-	Varies
10720273	Treated Sarking Board	-	19 x 150	-	240
10692506	Treated Counter Batten	-	38 x 50	-	300
10752004	Treated to Zero Firing	-	47 x 50	-	200
10692511	Treated C/C / Tilt / Arris	-	47 x 50	-	480
10692508	Treated C/C / Tilt / Arris	-	47 x 100	-	100
10692515	Treated Lead Roll	-	50 x 50	-	200
<b>Treated Roofing Timber</b>					
10733573	Kiln Dried Planed All Round (PAR)	47 x 50	45 x 45	Ungraded	242
10692512	Kiln Dried Planed All Round (PAR)	47 x 75	45 x 70	C16	150
10692507	Kiln Dried Planed All Round (PAR)	47 x 100	45 x 95	C24	110
10692509	Kiln Dried Planed All Round (PAR)	47 x 125	45 x 120	C24	90
10692516	Kiln Dried Planed All Round (PAR)	47 x 150	45 x 145	C24	70
10692519	Kiln Dried Planed All Round (PAR)	47 x 175	45 x 170	C24	60
10692520	Kiln Dried Planed All Round (PAR)	47 x 200	45 x 195	C24	50
10692521	Kiln Dried Planed All Round (PAR)	47 x 225	45 x 220	C24	50

Linear metres per pack (m)											
Lengths (m)											
2.1	2.4	3.0	3.3	3.6	3.9	4.2	4.5	4.8	5.1	5.4	6.0
		1680	1848	2016	2184	2352	2520	2688	2856	3024	
		1320	1452	1584	1716	1848	1980	2112	2244	2376	
		2100	2310	2520	2730	2940	3150	3360	3570	3780	
		1680	1848	2016	2184	2352	2520	2688	2856	3024	
		1320	1452	1584	1716	1848	1980	2112	2244	2376	
10500	12000										
		3360									
		2640									
		1320	1452	1584	1716	1848	1980	2112	2244	2376	
				Varies		Varies		Varies			
				Varies		Varies		Varies			
						1008		1152			
		900	990	720	1170	1260	1350	1440			
				864							
									2304		
				864							
	240										
		528	660	792		924		1056		1188	1320
		360	450	540		630		720		810	900
		264	330	396		462		528		594	660
		2376	2970	3564		4158		4752		5346	5640
		168	210	252		294		336		378	420
		144	180	216		252		288		324	360
		120	150	180		210		240		270	300
		120	150	180		210		240		270	300

# Product Range & Pack Information

Product code	Product	Nominal size(mm)	Actual size(mm)	Grade (if applicable)	Pack Qty (pcs unless stated)
<b>Untreated carcassing</b>					
10707357	Kiln Dried Planed All Round (PAR)	47 x 50	45 x 45	Ungraded	242
10707358	Kiln Dried Planed All Round (PAR)	47 x 75	45 x 75	C16	154
10707359	Kiln Dried Planed All Round (PAR)	47 x 100	45 x 95	C24	121
10707361	Kiln Dried Planed All Round (PAR)	47 x 125	45 x 120	C24	99
10707363	Kiln Dried Planed All Round (PAR)	47 x 150	45 x 145	C24	77
10707364	Kiln Dried Planed All Round (PAR)	47 x 175	45 x 170	C24	66
10707365	Kiln Dried Planed All Round (PAR)	47 x 200	45 x 195	C24	55
10707366	Kiln Dried Planed All Round (PAR)	47 x 225	45 x 220	C24	55
<b>Canadian Lumber Standard (CLS)</b>					
10692517	SOFTWOOD CLS	50 x 75	38 x 63	C16	448
10692518	SOFTWOOD CLS	50 x 100	38 x 89	C16	336
<b>Scaffold Boards</b>					
10692050	Scaffold Board End Banded	-	36 x 225	BS 2482 VG	55
<b>Cedar Shingles &amp; Ridge (Treated)</b>					
10532816	Shingles (Min Order 25 Bundles)	-	-	5X Blue Label	2.28m <sup>2</sup> per bundle
10532819	Ridge (Order with Shingles)	-	-	5X Blue Label	4.5lm per bundle
10238685	Stainless Steel 31x1.8mm Nails (1KG Box)	-	-	SS	1kg
<b>Cedar Shingles &amp; Ridge (Untreated)</b>					
10667211	Shingles (Min Order 25 Bundles)	-	-	5X Blue Label	2.28m <sup>2</sup> per bundle
10532818	Ridge (Order with Shingles)	-	-	5X Blue Label	4.5lm per bundle
<b>Oriented Strand Board (OSB)</b>					
10268993	SMARTPLY 9mm (metric)	-	2397 x 1197	OSB3	100
10268988	SMARTPLY 11mm (metric)	-	2440 x 1220	OSB3	82
10268990	SMARTPLY 18mm (metric) TG4	-	600 x 2400	OSB3	100
10268987	SMARTPLY 18mm (metric)	-	2440 x 1220	OSB3	50

Linear metres per pack (m)											
Lengths (m)											
2.1	2.4	3.0	3.3	3.6	3.9	4.2	4.5	4.8	5.1	5.4	6.0
	528	660		792		924		1056		1188	1320
	360	450		540		630		720		810	900
	264	330		396		462		528		594	660
	2376	2970		3564		4158		4752		5346	5640
	168	210		252		294		336		378	420
	144	180		216		252		288		324	360
	120	150		180		210		240		270	300
	120	150		180		210		240		270	300
	1075.5	1344						2150.4			
	806.4	1008						1612.8			
						214.5					

# Conversion factors

## Imperial = Metric

standards	0.214 m <sup>3</sup>
cu yards	0.795 m <sup>3</sup>
sq yards	0.8361 m <sup>2</sup>
yards	0.9144 m
cu feet	0.0283 m <sup>3</sup>
sq feet	0.0929 m <sup>2</sup>
feet	0.3048 m
inches	25.4 mm
tons	1.01605 tonnes
pounds (lbs)	0.4536 kg
lbs cu yard	0.5933 kilos/m <sup>3</sup>
lbs ft <sup>2</sup>	4.882 kilos/m <sup>2</sup>
lbs in <sup>2</sup>	0.0703

## Metric = Imperial

m <sup>3</sup>	4.672 standards
m <sup>3</sup>	1.308 cu yards
m <sup>2</sup>	1.196 sq yards
m	1.094 yards
m <sup>3</sup>	35.315 cu feet
m <sup>2</sup>	10.764 sq feet
m	3.281 feet
mm	0.0394 inches
tonnes	0.9841 tons
kg	2.2046 pounds
kilos/m <sup>3</sup>	1.6860 lbs cu yard
kilos/m <sup>2</sup>	0.2048 lbs ft <sup>2</sup>
kilos/cm <sup>2</sup>	14.223 lbs in <sup>2</sup>

## Linear Metres in M<sup>3</sup>

### Size = M in M<sup>3</sup>

19 x 38 = 1385 m
25 x 38 = 1053 m
25 x 50 = 800 m
22 x 100 = 455 m
22 x 150 = 303 m
32 x 100 = 313 m
32 x 200 = 156 m
38 x 100 = 263 m
38 x 150 = 175 m
38 x 200 = 132 m

## Linear Metres in M<sup>3</sup>

47 x 50 = 426 m
47 x 75 = 284 m
47 x 100 = 213 m
47 x 125 = 170 m
47 x 150 = 142 m
47 x 175 = 122 m
47 x 200 = 106 m
47 x 225 = 95 m
47 x 250 = 85 m
50 x 100 = 200 m
50 x 150 = 133 m
50 x 200 = 100 m

63 x 150 = 106 m
63 x 200 = 79 m
63 x 225 = 71 m
75 x 150 = 89 m
75 x 175 = 76 m
75 x 200 = 67 m
75 x 225 = 60 m
75 x 250 = 54 m
100 x 100 = 100 m
100 x 150 = 67 m
100 x 200 = 50 m

## Linear Feet in CuFt

### Size = Ft per CuFt

1 x 6" = 24'
1 x 8" = 18'
1 1/4 x 6" = 19'
1 1/2 x 6" = 16'
1 1/2 x 8" = 12'
2 x 6" = 12'
2 1/2 x 6" = 9.6'
2 1/2 x 8" = 7.2'
3 x 6" = 8'

## Product weights

Product	Weight
Hardwood	1.20 Tonne / M <sup>3</sup> per pack
Softwood	0.75 Tonne / M <sup>3</sup> per pack
OSB / Plywood	1.70 Tonne / M <sup>3</sup> per pack

## Hardwood/Softwood Length Conversion

Ft = M	M = Ft
6' = 1.83	1.8 = 5'11"
7' = 2.13	2.1 = 6'10 1/2"
8' = 2.44	2.4 = 7'10 1/2"
9' = 2.74	2.7 = 8'10"
10' = 3.05	3.0 = 9'10"
11' = 3.35	3.3 = 10'10"
12' = 3.66	3.6 = 11'9 1/2"
13' = 3.96	3.9 = 12'9 1/2"
14' = 4.27	4.2 = 13'9 1/2"
15' = 4.57	4.5 = 14'9"
16' = 4.88	4.8 = 15'9"
17' = 5.18	5.1 = 16'8 1/2"
18' = 5.49	5.4 = 17'8 1/2"
19' = 5.75	5.7 = 18'8 1/2"
20' = 6.10	6.0 = 19'8 1/2"
21' = 6.40	6.3 = 20'8"
22' = 6.70	6.6 = 21'8"
23' = 7.01	6.9 = 22'7 1/2"
24' = 7.32	7.2 = 23'7 1/2"

## Hardwood/Softwood Dimensional Conversion

Inches = mm	mm = Inches
1/2" = 12.70	12 = 0.47"
5/8" = 15.88	16 = 0.63"
3/4" = 19.05	19 = 0.75"
1" = 25.40	25 = 0.98"
1 1/4" = 31.75	32 = 1.26"
1 1/2" = 38.10	38 = 1.50"
1 7/8" = 47.62	47 = 1.85"
2" = 50.80	50 = 1.97"
2 1/2" = 63.50	63 = 2.48"
3" = 76.20	75 = 2.95"
4" = 101.60	100 = 3.94"
5" = 127.00	125 = 4.92"
6" = 152.40	150 = 5.90"
7" = 177.80	175 = 6.89"
8" = 203.20	200 = 7.87"
9" = 228.60	225 = 8.85"
10" = 254.00	250 = 9.84"
11" = 279.40	275 = 10.83"
24" = 7.32	

## Sheet Conversion Length/Width/Thickness

Inches = mm	
23.6" = 600	1/16" = 1.5
24" = 610	1/8" = 3.2
30" = 762	1/4" = 6.5
33" = 838	5/16" = 8
36" = 915	3/8" = 9
48" = 1220	1/2" = 12
60" = 1525	5/8" = 15
61" = 1550	11/16" = 17.5
72" = 1830	3/4" = 19
78" = 1982	7/8" = 22
84" = 2135	1" = 25
96" = 2440	1 1/16" = 30
108" = 2745	1 1/4" = 32
120" = 3050	1 1/2" = 38
144" = 3660	1 3/4" = 45
205" = 5205	2" = 50

## Area

Ft = M <sup>2</sup>
10.76 sq ft = 1 m <sup>2</sup>
100 sq ft = 9.29 m <sup>2</sup>
10' x 5' = 4.6513 m <sup>2</sup>
10' x 4' = 3.7210 m <sup>2</sup>
8' x 4' = 2.9768 m <sup>2</sup>
8' x 2' = 1.4884 m <sup>2</sup>
7' x 3' = 1.9535 m <sup>2</sup>
6'6" x 2'6" = 1.5100 m <sup>2</sup>
6' x 4' = 2.2330 m <sup>2</sup>
6' x 2' = 1.1163 m <sup>2</sup>
5' x 5' = 2.3256 m <sup>2</sup>
4' x 4' = 1.4884 m <sup>2</sup>
4' x 3' = 1.1163 m <sup>2</sup>
4' x 2' = 0.7442 m <sup>2</sup>



If you need assistance with choosing the right timber for your project please do not hesitate to contact us. We can also supply you with copies of our 'Guide to Graded Roofing Battens' and product data sheets.

These are also available on our website at [sr-timber.co.uk](http://sr-timber.co.uk)



Our passion is correctness.



S R TIMBER  
NUNN BROOK ROAD  
HUTHWAITE  
SUTTON-IN-ASHFIELD  
NOTTINGHAMSHIRE  
NG17 2HU

T: 01623 446800  
E: sales@sr-timber.co.uk



[sr-timber.co.uk](https://sr-timber.co.uk)

SRTPB0226 V2 | © SR Timber 2026. All rights reserved.

The information contained in this document is believed to be correct at the date of publication. Images used are for illustration purposes only.

SRT GOLD® and SR Timber GOLD® are registered trademarks of SIG Trading Limited.